



450 MBIT DUAL BAND WIRELESS ACCESS POINT | ROUTER



Quick Installation Guide
DN-70690

Table of Contents

Package Contents	Page 1
Build Network Connections.....	Page 2
Network Setup	Page 3

Package Contents

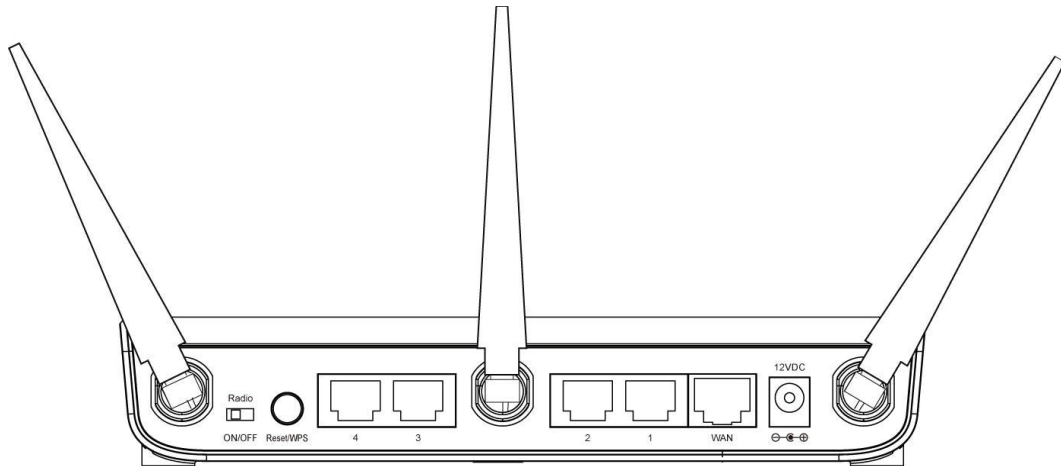
Before you starting to use this router, please check if there's anything missing in the package, and contact your dealer of purchase to claim for missing items:

- Broadband router (main body, 1 pcs)
- Quick installation guide / User manual CD-ROM (1 pcs)
- A/C power adapter (1 pcs)

Build Network Connections

Please follow the following instructions to setup wireless router:

1. Bending two antennas in the right side and left side to 45 degree angle and adjust the antenna in the middle to vertical position. Refer to the following figure.



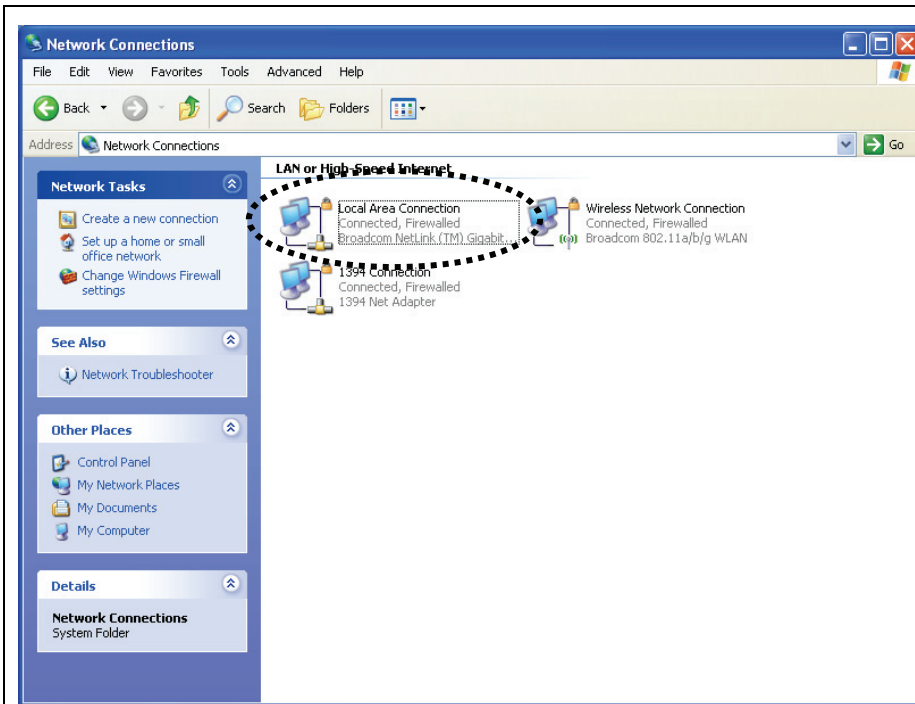
2. Connect your xDSL / cable modem to the WAN port of router by Ethernet cable.
3. Connect all your computers, network devices (network-enabled consumer devices other than computers, like game console, or switch / hub) to the LAN port of the router.
4. Connect the A/C power adapter to the wall socket, and then connect it to the 'Power' socket of the router.

Please check all LEDs on the front panel. 'PWR' LED should be steadily on, WAN and LAN LEDs should be on if the computer / network device connected to the respective port of the router is powered on and correctly connected.

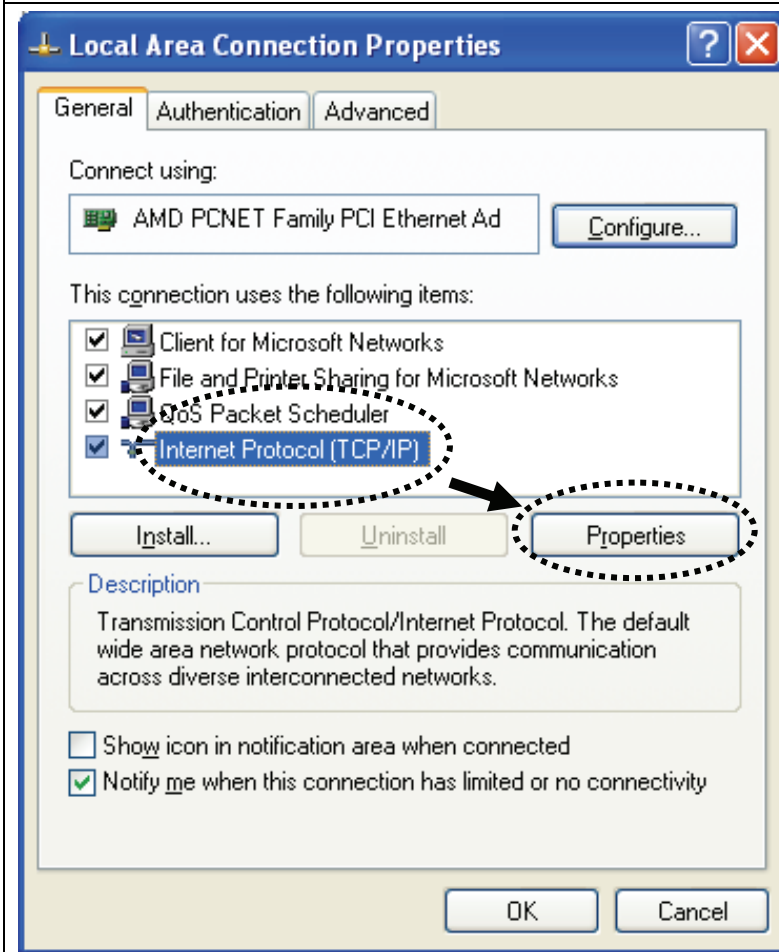
If 'PWR' LED is still off and you're sure that all cable connections are connected properly, please contact your dealer of purchase for assistance.

Network Setup

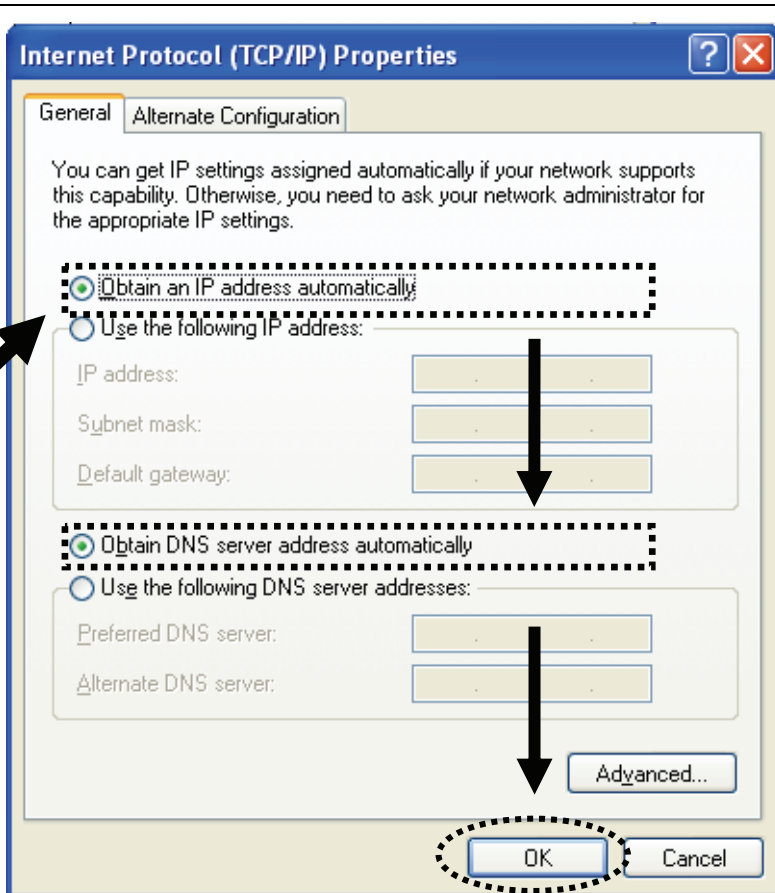
Please use the web browser to configure the wireless router. A computer with wired Ethernet connection to the wireless router is required for this first-time configuration.



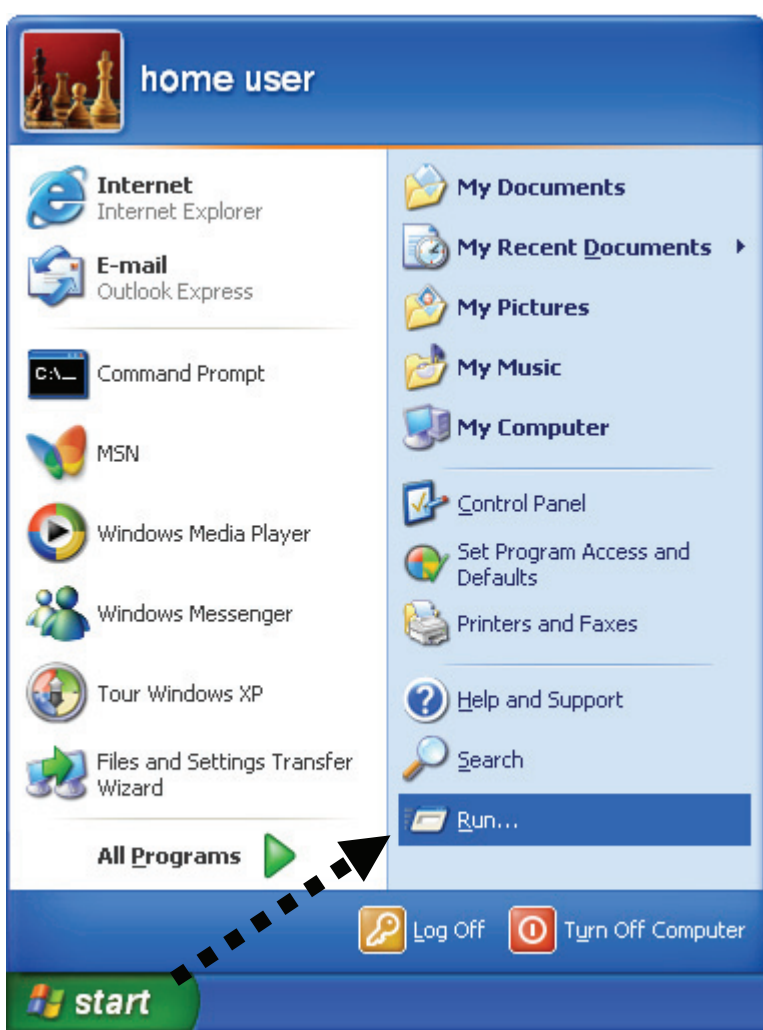
1. Set your computer to obtain an IP address from wireless router: click 'Start' button (it should be located at lower-left corner of your computer), then click control panel. Double-click **Network Connections**, then right-click **Local Area Connection** and click 'Properties'.



2. **Local Area Connection Properties** window will appear. Select **Internet Protocol (TCP/IP)**, then click 'Properties'.



3. Select 'Obtain an IP address automatically' and 'Obtain DNS server address automatically', then click 'OK'.



4. After the IP address setup is complete, please click 'start' -> 'run' at the bottom-lower corner of your desktop, then input 'cmd' and click 'OK'.

```
C:\Documents and Settings\home user>ipconfig

Windows IP Configuration

Ethernet adapter Local Area Connection:

    Connection-specific DNS Suffix . : 
    IP Address. . . . . : 192.168.2.3
    Subnet Mask . . . . . : 255.255.255.0
    Default Gateway . . . . . : 192.168.2.1

C:\Documents and Settings\home user>_
```

5. Input 'ipconfig', then press 'Enter' key. Please check the IP address followed by 'Default Gateway' (In this example, the IP address of router is 192.168.2.1) **Please note that this value may be different.**

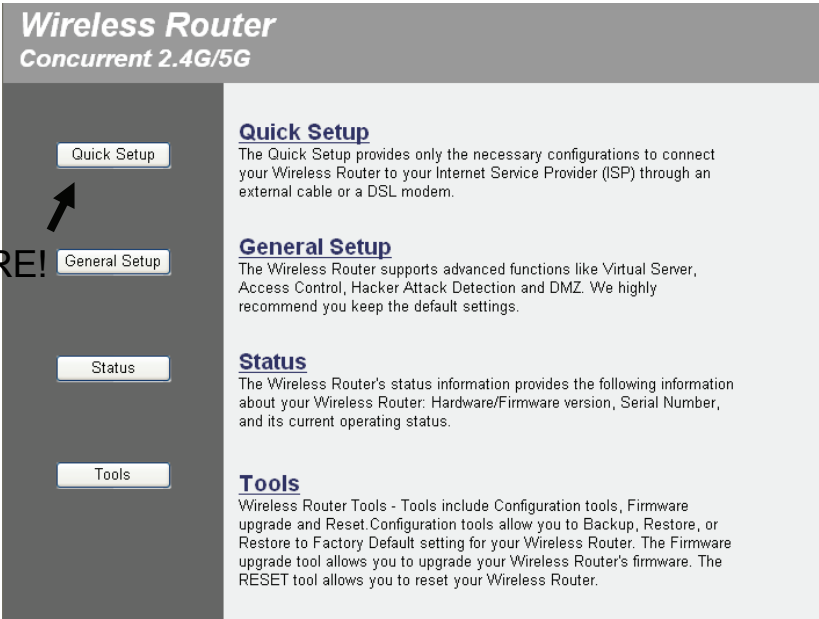


HERE!



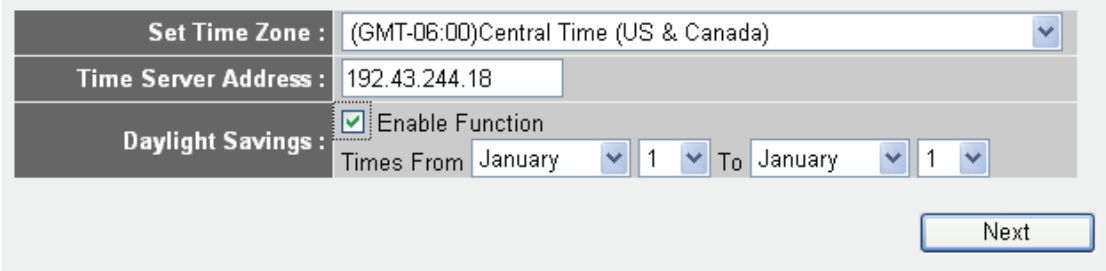
6. Start the web browser and input the IP address of wireless router in address bar, and the following message should be shown. Please input user name and password, then click 'OK' to access web management interface of wireless router.

Default user name: admin
Default password: 1234



HERE!

7. Click 'QuickSetup'



8. Select time zone of the area where you live, then click 'Next'.

Broadband Type

Specify the WAN connection type required by your Internet Service Provider. Specify a Cable modem, Fixed-IP xDSL, PPPoE xDSL or PPTP xDSL connection.

Cable Modem

A connection through a cable modem requires minimal configuration. When you set up an account with your Cable provider, the Cable provider and your Broadband router will automatically establish a connection, so you probably do not need to enter anything more.

Fixed-IP xDSL

Some xDSL Internet Service Providers may assign a Fixed IP Address for your Broadband router. If you have been provided with this information, choose this option and enter the assigned IP Address, Subnet Mask, Gateway IP Address and DNS IP Address for your Broadband router.

PPPoE xDSL

If you connect to the Internet using an xDSL Modem and your ISP has provided you with a Password and a Service Name, then your ISP uses PPPoE to establish a connection. You must choose this option and enter the required information.

PPTP xDSL

If you connect to the Internet using an xDSL Modem and your ISP has provided you with a Password, Local IP Address, Remote IP Address and a Connection ID, then your ISP uses PPTP to establish a connection. You must choose this option and enter the required information.

9. Select a broadband type of the Internet connection you're using, then click 'Next'.

Fixed-IP xDSL

Enter the IP Address, Subnet Mask, Gateway IP Address and DNS IP Address provided to you by your ISP in the appropriate fields.

IP address assigned by your Service Provider :	<input type="text" value="172.1.1.1"/>
Subnet Mask :	<input type="text" value="255.255.0.0"/>
DNS address :	<input type="text"/>
Service Provider Gateway Address :	<input type="text" value="172.1.1.254"/>

10. Please input the Internet connection parameters, you should use the value provided by your Internet service provider.

Click 'OK' when you finish.

(The content of this page will vary depends on the connection method you selected in step 9)

Save setting successfully!

Please press APPLY button to restart the system for changes to take effect.

11. Click 'Apply'.

System Restarting! Please wait for a while !

12. When you see this message, the router will be ready with new settings within 30 seconds.

13. Please use your computer to connect to any website on Internet, or start any Internet application and see if they're working properly.

For instructions of advanced settings and wireless network setup, please refer to user manual in supplied CD-ROM.

